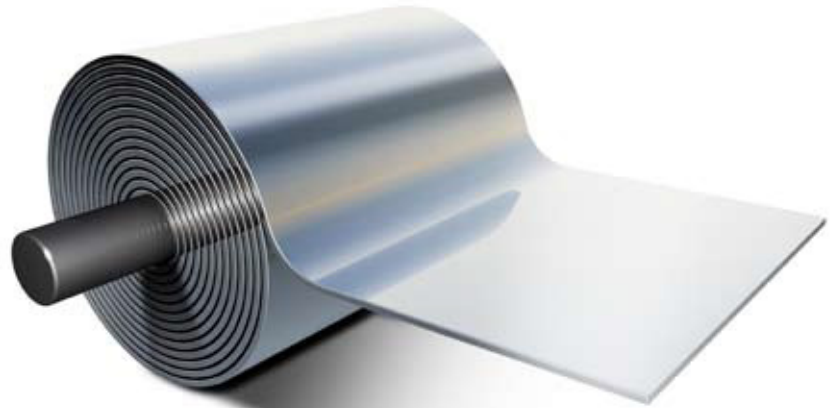
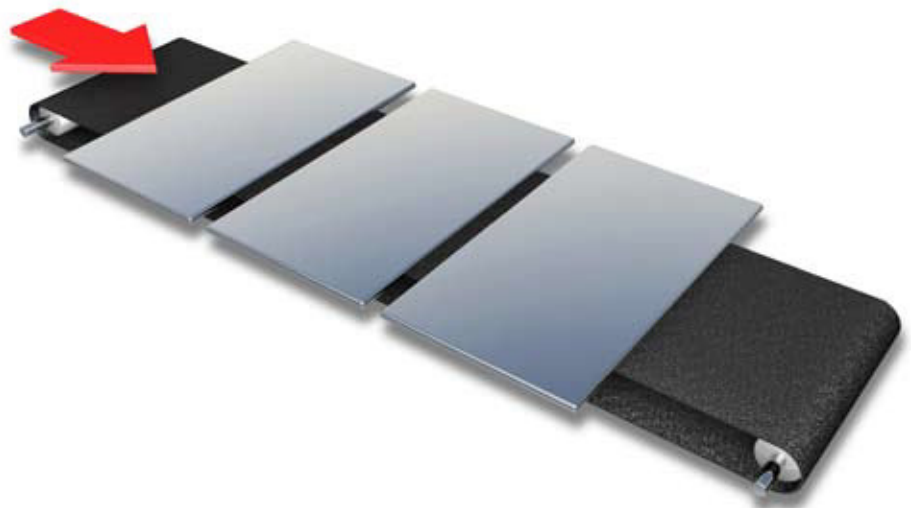




1. Steel strip arrives at the can manufacturing plant in large coils.



2. Steel strip is cut into large sheets.



3. Lacquer is applied to the side of the sheets that will become the internal surfaces of the finished cans and if necessary print is applied to the external surfaces.











12. The finished can bodies are then transferred to the warehouse to be automatically palletised before despatch to the filling plant.

