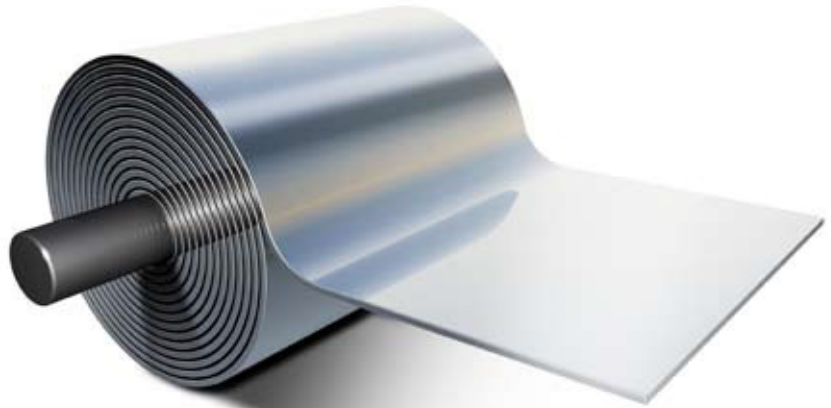
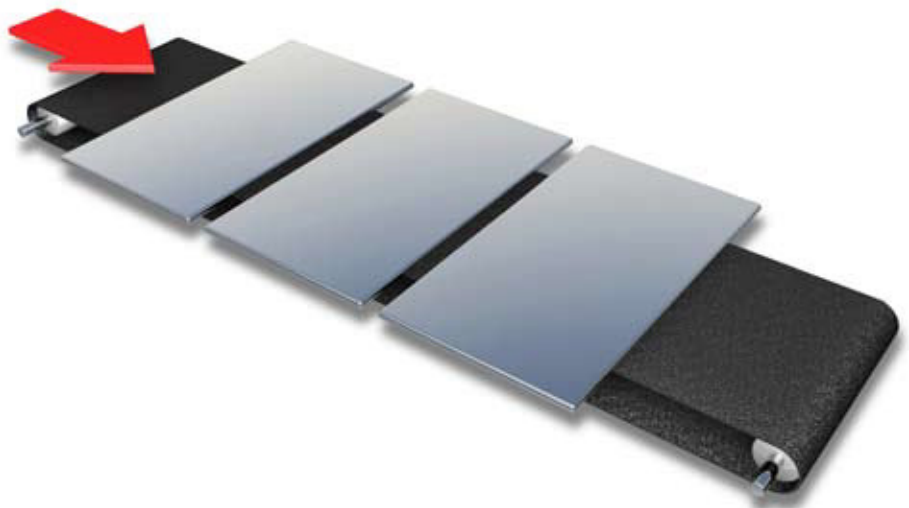




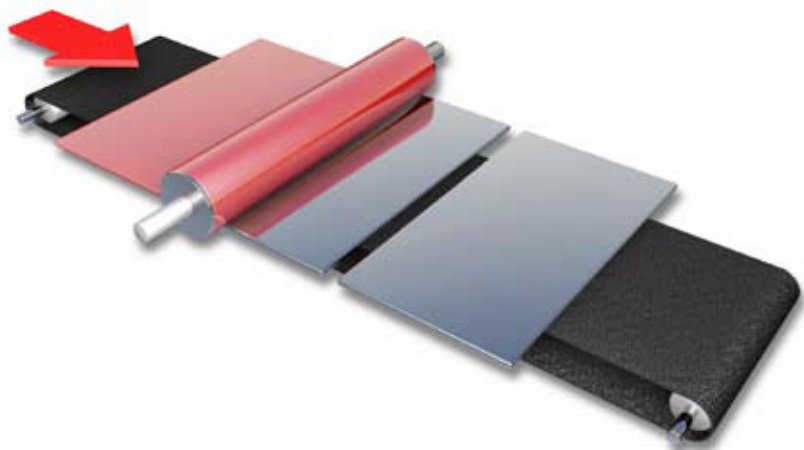
1. Steel strip arrives at the can manufacturing plant in large coils.



2. Steel strip is cut into large sheets.



3. When necessary for the design of the container and product packed, lacquer is applied to the side of the sheet that will become the internal surface and / or print is applied to the external surfaces.









9. Finished containers are packed into cartons which are then palletised, or directly onto pallets, depending on the can design.

